

<b>Name</b>	<b>CHIMPANZEE SALT CAPS 150 cps, 183 g</b>	
<b>Produced for</b>	Monkey Brothers s.r.o., Červený dvůr 1172/17, Pod Cvilínem, 794 01 Krnov, Czech Republic	
<b>VAT NUMBER</b>	CZ28276141	
<b>Factory</b>	Monkey Brothers s.r.o., Červený dvůr 1172/17, Pod Cvilínem, 794 01 Krnov, Czech Republic, Tel.: 554611717	
<b>Country of origin</b>	Czech Republic	
<b>EAN PRODUCT</b>	8594157877094	
<b>EAN CARTON 60 pcs</b>	8594157877100	
<b>Product code</b>		
<b>Type of product</b>	Food supplement	For direct consumption
<b>Ingredients</b>	<b>INGREDIENTS:</b> Sodium chloride, potassium chloride, capsule (hydroxypropylmethylcellulose), anti-caking agent: magnesium salts of fatty acids; magnesium bisglycinate, magnesium citrate.	
<b>Benefits</b>	Anti cramps & Performance matrix. Electrolyte Balance.	
<b>Product weight</b>	183 g	
<b>Expiration date</b>	48 months	
<b>Recommended dosage and use</b>	<b>RECOMMENDED DOSAGE:</b> 3 capsules daily. For prolonged physical activity and heavy sweating, the dose can be increased to up to 5 capsules daily. Take with sufficient liquid.	
<b>Warning</b>	<b>WARNING:</b> Keep out of reach of small children. Not suitable for children, pregnant women, or breastfeeding women. Do not exceed the stated recommended daily dose. Not a substitute for a varied diet. Best before: see packaging.	
<b>Storage conditions</b>	Protect from heat, cold and moisture.	

PHYSICAL AND CHEMICAL PROPERTIES				
		Permitted range	Frequency of monitoring	Determination method
<b>Impurities and admixtures</b>	glass, metal, plastic, wood	0 pcs	each delivery	Sensory
	pests at any stage of development	0 pcs	each delivery	Sensory
	mineral impurities	0 pcs	each delivery	Sensory
	other impurities / contaminants	max. 0,01 %	each delivery	Sensory

CHEMICAL PROPERTIES		
Parametr	Unit	Result
Lead	mg/kg	max. 3,0
Cadmium	mg/kg	max. 1,0
Mercury	mg/kg	max. 0,1

MICROBIOLOGICAL PROPERTIES		
Test	Unit	Result
Aerobic Plate Count	CFU/g	<10 <sup>5</sup>
E. Coli	CFU/g	Not Detected
Salmonella	CFU/25 g	Negative
Yeast	CFU/g	<10 <sup>5</sup>
Moulds	CFU/g	<10 <sup>4</sup>

STATEMENT		
<b>ATEST:</b> (statement Quality of delivery)	Can we as a supplier able to attach to deliver certificate of quality parameters?	<b>YES</b>
<b>PESTICIDES</b>	The product meets requirements of the European Parliament and of the Council (EC) no. 396/2005 of 23 February 2005 on maximum residue levels of pesticides in food and feed of plant and animal origin and amending Council Directive 91/414 / EEC.	<b>YES</b>
<b>IONIZING RADIATION</b>	The product is treated with ionizing radiation (treatments for raw material supplier)	<b>NO</b>
<b>Novel food (GMO)</b>	Was the product or its ingredient (indicate which) produced from GMOs?	<b>NO</b>
	Contains product or component (specify which) GMO?	<b>NO</b>
	If a product contains the following components must be accompanied by a valid certificate of GMO: papaya, rice, soybeans, corn, rapeseed oil - indicate which of them contains:	<b>NO</b>
<b>ADDITIVES</b>	Preservatives (Sorbates, benzoates etc.)	<b>NO</b>
	Sweeteners	<b>YES</b>
	Colorants	<b>YES</b>
	Sulfur dioxide and sulphites	<b>NO</b>
	Sugar	<b>NO</b>

	ALERGENS	Alergens in product	Alergens in production	Trace of allergen in the product
	Gluten			<b>X</b>
Crustaceans and products thereof				
Eggs and products thereof			<b>X</b>	<b>X</b>
Fish and products thereof			<b>X</b>	<b>X</b>
Peanuts				

<b>Presence food allergens in product</b>	Dry nuts, ie. almonds, hazelnuts, walnuts, cashews, pecans, Brazil nuts, pistachios, macadamia and articles thereof		<b>X</b>	<b>X</b>
	Milk and products thereof		<b>X</b>	<b>X</b>
	Soy and products thereof		<b>X</b>	<b>X</b>
	Celery and products thereof			
	Mustard and products thereof			
	Sesame seeds and products thereof			
	Sulfur dioxide and sulphites			
	Molluscs and products thereof			
Lupine and products thereof				

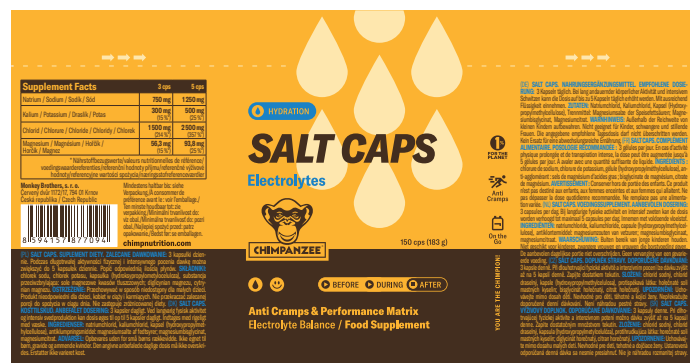
### Supplement Facts

	<b>3 cps</b>	<b>5 cps</b>
<b>Natrium / Sodium / Sodík / Sód / Sodio</b>	<b>750 mg</b>	<b>1 250 mg</b>
<b>Kalium / Potassium / Draslík / Potas / Potasio</b>	<b>300 mg</b> (15 %*)	<b>500 mg</b> (25 %*)
<b>Chlorid / Chlorure / Chloride / Chloridy / Chlorek / Cloro</b>	<b>1 500 mg</b> (214 %*)	<b>2 500 mg</b> (357 %*)
<b>Magnesium / Magnésium / Hořčík / Horčík / Magnez / Magnesio</b>	<b>56,3 mg</b> (15 %*)	<b>93,8 mg</b> (25 %*)
* Nährstoffbezugswerte/valeurs nutritionnelles de référence/voedingswaardereferenties/referenční hodnoty příjmu/referenčné výživové hodnoty/næringsstofreferenceværdier/referencyjne wartości spożycia/valores de referencia de nutrientes		

\* nutrient reference intake

**PACKAGING**

<b>Primary package ID</b> <i>Číslo primární obalu (QI)</i>	
<b>Version of packaging</b> <i>Verze obalu</i>	
<b>Languages</b> <i>Jazyky</i>	DE, FR, NL, CZ, SK, PL, DK
<b>Consumer Packaging</b> <i>Spotřebitelské balení</i>	
<b>Size</b> <i>Velikost obalu</i>	
<b>Package weight</b> <i>Váha obalu</i>	
<b>Print technology</b> <i>Tisková technologie</i>	
<b>Print orientation</b> <i>Orientace tisku</i>	
<b>Color specification</b> <i>Barevnost</i>	
<b>Recycling symbols</b> <i>Recyklační symboly</i>	
<b>Other symbols</b> <i>Jiné symboly</i>	
<b>Wholesomeness of primary Packaging</b> <i>Prohlášení o zdravotní nezávadnosti obalu</i>	PP sheet complies with the requirements of Commission Regulation (EU) no. 10/2011, dated 14 January 2011 on materials and articles made of plastics intended for contact with food (as amended) / PP list vyhovuje požadavkům nařízení Komise (EU) č. 10/2011 ze dne 14. ledna 2011 o materiálech a předmětech z plastů určených pro styk s potravinami (ve znění pozdějších předpisů)



<b>Secondary package ID</b> <i>Sekundární obal (QI)</i>	
<b>Box Packaging</b> <i>Kartonové balení</i>	
<b>Material</b> <i>Materiál</i>	

<b>Size</b> <i>Velikost obalu</i>		
<b>Package weight</b> <i>Váha obalu</i>		
<b>Print technology</b> <i>Tisková technologie</i>		
<b>Color specification</b> <i>Barevnost</i>		
<b>Other</b> <i>Jiné</i>	-	
<b>Declaration of secondary Packaging</b> <i>Prohlášení</i>	FSC / FSC	
	<b>SUPPLIER</b> <i>Dodavatel</i>	<b>CUSTOMER</b> <i>Zákazník</i>
<b>Name</b>	Josef Toufar	
<b>Position</b>	CEO	
<b>E-mail</b>	<a href="mailto:toufar@chimpanzeebar.com">toufar@chimpanzeebar.com</a>	
<b>Date</b>	20.4.2026	
<b>Signature and stamp</b>		